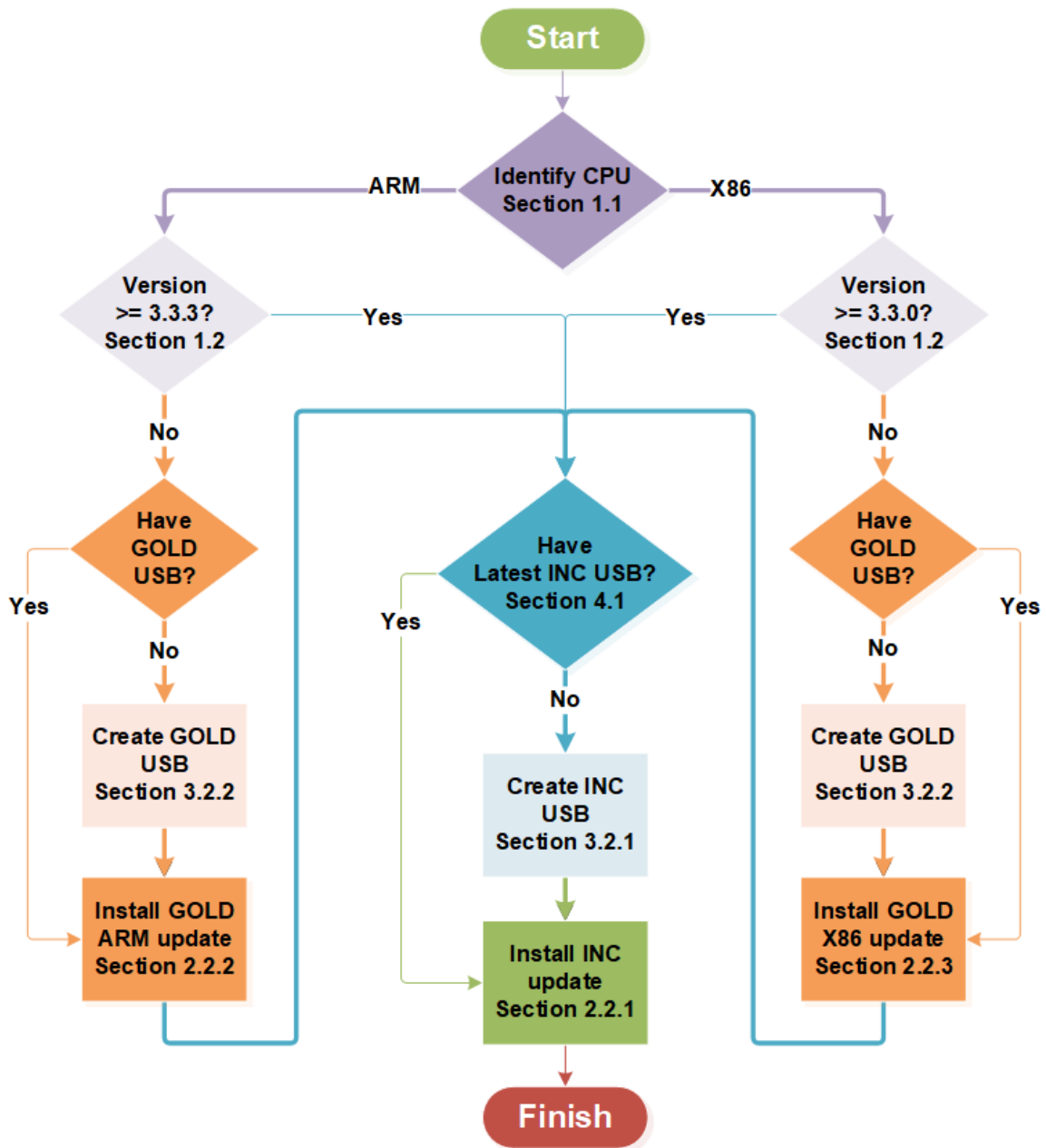


What EMCenter CPU or Version Number

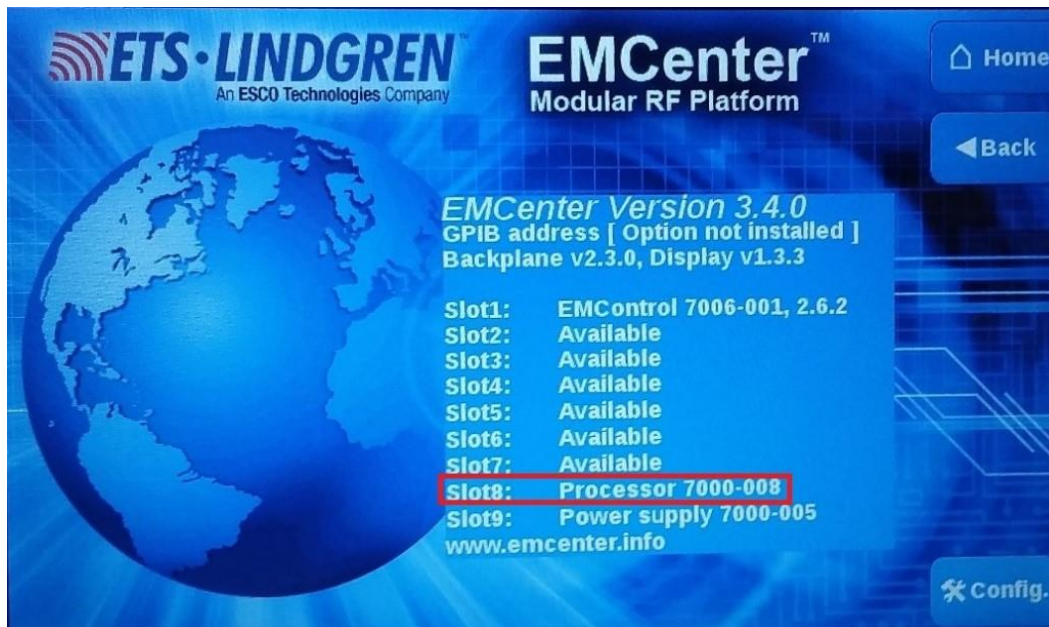
1. Hello everyone, this video reviews identifying the CPU with either the touch screen or the back panel, and a review of the information page.



2. So where do you start?
 - a. First, use the following flowchart to figure out which firmware update to use.
 - b. The incremental releases have the latest firmware for the EMCenter, but your version must be up to the GOLD version before you can use an incremental update.
 - c. There are two types of CPU for the EMCenter: x86 or ARM.
 - i. It is important to know which CPU card you are using because the instructions for the GOLD update are dependent upon which chipset you have.
 - ii. X86 is also now in long-term support, so the version numbers will be different from the ARM. The X86 version will remain at v3.3.X, since new functionality will not be added.



3. If the CPU is in an EMCenter, then you can look at the info page to identify the CPU.



- a. The processor number tells you the CPU type in slot 8.
- b. A Standard X86 will have model number 7000-**006** or an X86 with a GPIB is 7000-**007**.
- c. A Standard ARM will be 7000-**008** and an ARM with a GPIB is 7000-**009**.
- d. Once again, you can find this information on the info page under slot 8 to find the processor model number.

4. If you are looking at the physical card of the CPU, it is easily identifiable by whether it has an RS232 (or also called a 9-pin serial port).
 - a. The x86 HAS a 9-pin serial port while the ARM does NOT have a 9-pin serial port.



5. Thank you for watching this video.